

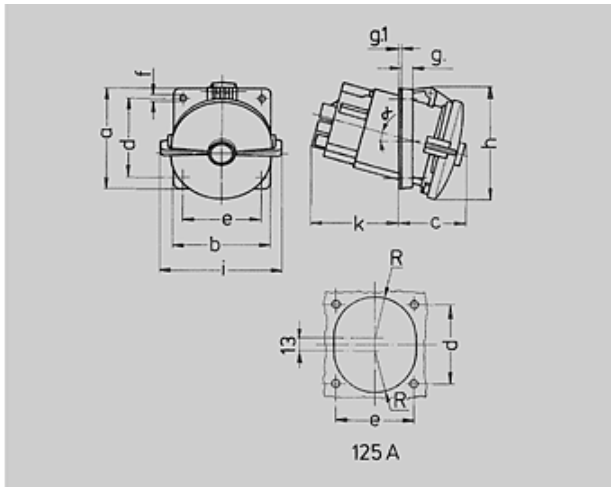
N° de Ref. : 205A

Base semiempotrable


inclinación 63A 20°, 125A 15°







*) 63A: con SoftCONTACT,

125A: contacto de muelle de torsión



1 MB 298	Amp.	63			125		
		1 MB 339			1 MB 339		
		Polos			Polos		
Dim. en mm		3	4	5	3	4	5
a		110	110	110	114	114	114
b		106	106	106	110	110	110
c		85	85	85	85	85	85
d		85	85	85	90	90	90
e		77	77	77	90	90	90
f		6,2	6,2	6,2	6,2	6,2	6,2
g		12	12	12	13	13	13
g ₁		2	2	2	2	2	2
h		125	125	125	135	135	135
i		117	117	117	135	135	135
k		69	69	69	103	103	103
R		46	46	46	47	47	47
α		20°	20°	20°	15°	15°	15°
Borna para cond.	Sección	6	6	6	25	25	25
Transvers. (mm ²) min.-máx.		-25	-25	-25	-70	-70	-70

Grupo de artículos :	1048
voltages :	400V
rated current :	63A
pole :	4 pole
IP protection types :	IP67
position of ground contact :	6h
packing unit :	0005
Peso :	615 g

N° DE REF.		110V	230V	400V	500V	>50-500V	
		50,60	50,60	50,60	50,60	100-300	300-500
Color código							
Amperios							
63 A	3	2179A	2180A	2181A			
	4	203A	204A	<u>205A</u>	206A		
	5	207A	208A	209A	3507		
125 A	3		3575				
	4	210A	211A	212A	213A		
	5	214A	215A	216A			