



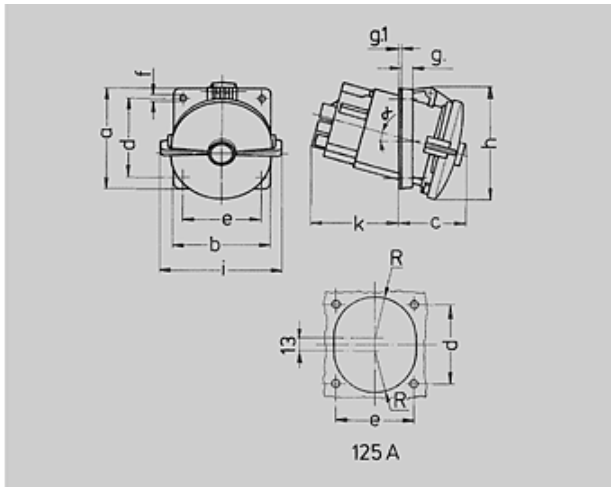
N° de Ref. : 216A

Base semiempotrable

inclinación 63A 20°, 125A 15°

*) 63A: con SoftCONTACT,

125A: contacto de muelle de torsión



1 MB 298 1 MB 339	Amp. Polos	63			125			
		3	4	5	3	4	5	
Dim. en mm		a	110	110	110	114	114	114
		b	106	106	106	110	110	110
		c	85	85	85	85	85	85
		d	85	85	85	90	90	90
		e	77	77	77	90	90	90
		f	6,2	6,2	6,2	6,2	6,2	6,2
		g	12	12	12	13	13	13
		g ₁	2	2	2	2	2	2
		h	125	125	125	135	135	135
		i	117	117	117	135	135	135
		k	69	69	69	103	103	103
		R	46	46	46	47	47	47
		α	20°	20°	20°	15°	15°	15°
Borna para cond. Sección Transvers. (mm ²) min.-máx.			6	6	6	25	25	25
			-25	-25	-25	-70	-70	-70

Grupo de artículos : 1048

voltages : 400V

rated current : 125A

pole : 5 pole







IP protection types : IP67

position of ground contact : 6h

packing unit : 0005

Peso : 1050 g

N° DE REF.

V	110V	230V	400V	500V	>50-500V	
Hz	50,60	50,60	50,60	50,60	100-300	300-500
Color código						
Amperios						
63 A	3	2179A	2180A	2181A		
	4	203A	204A	205A	206A	
	5	207A	208A	209A	3507	
125 A	3		3575			
	4	210A	211A	212A	213A	
	5	214A	215A	216A		